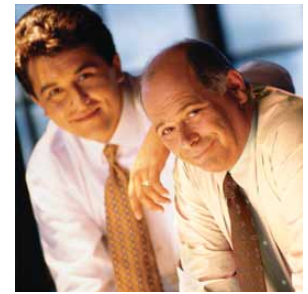




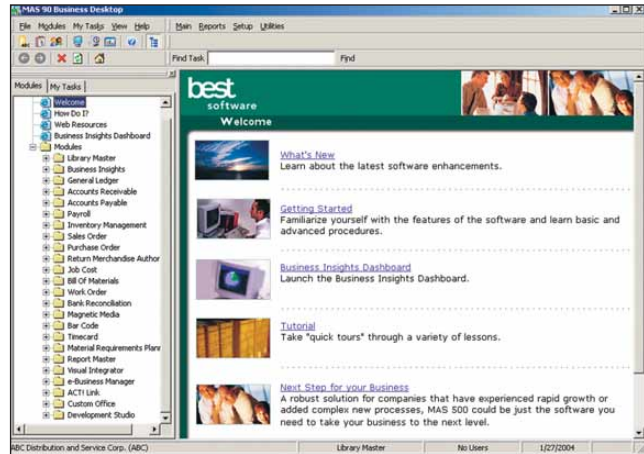
insights for the life of your business™

MAS 90

We leveraged 15 years of business software development experience to create MAS 90 — a graphical accounting and business management software that can give you increased productivity and improved business processes. MAS 90 is easy to learn and use, offers broad accounting functionality and integrates readily with other Windows applications such as Microsoft Word and Excel. Windows users will recognize the MAS 90 Business Desktop's Explorer-like interface, which allows them to locate any accounting task quickly and easily. Additionally, MAS 90 offers world-class financial and management reporting tools, superb customization capabilities and scalability for growing businesses.



RECOMMENDED SYSTEM CONFIGURATION



Minimum System Configuration for MAS 90 Level 4.0

Single User/Client Workstation Workstation (client) operating system versions not listed in this document will not be supported with MAS 90 version 4.0	Minimum ^{1,2}		Recommended Minimum ²	
	Processor	Memory (RAM)	Processor	Memory (RAM) Workstation
Windows 98 - 2nd Edition ^{3,4}	Pentium 233 MHz	64 MB	Pentium III 550 MHz	128 MB
Windows 2000 Professional	Pentium II 300 MHz	128 MB	Pentium III 550 MHz	256 MB
Windows XP Professional Edition	Pentium III 550 MHz	256 MB	Pentium III 550 MHz	256 MB
Windows XP Tablet PC Edition	Pentium III-M 800 MHz	256 MB	Pentium III-M 800 MHz	256 MB
Network Bandwidth (for multi-user systems)	Minimum		Recommended Minimum	
	10 Base-T – 10 Mbps		100 Base-T – 100 Mbps	

Terminal Services and Citrix	Processor	Memory (RAM)
Windows 2000 Terminal Services Citrix MetaFrame, or Citrix MetaFrame XP	As required by Terminal Services or Citrix	As required by Terminal Services or Citrix plus 32 MB per concurrent user ³
Windows Server 2003 Terminal Services Citrix MetaFrame, or Citrix MetaFrame XP	As required by Terminal Services or Citrix	As required by Terminal Services or Citrix plus 32 MB per concurrent user ³

Servers

Server operating system versions not listed in this document will not be supported with MAS 200 version 4.0

Supported Servers	Minimum ^{1,2}		Recommended Minimum ²	
	Processor	Memory (RAM)	Processor	Memory (RAM)
NetWare 4.20, 5.1, 6.0, 6.5* *contingent on compatibility testing	Pentium 200 MHz	128 MB + 2-3 MB per concurrent user	Pentium III 550 MHz	256 MB + 4-6 MB per concurrent user
Windows 98 - 2nd Edition (Peer-to-Peer) ^{3,4} (5 users maximum)	Pentium 233 MHz	64 MB + 4-6 MB per concurrent user	Pentium III 550 MHz	256 MB + 4-6 MB per concurrent user
Windows 2000 Server and Advanced Server	Pentium II 300 MHz	256 MB + 4-6 per concurrent user	Pentium III 550 MHz	256 MB + 4-6 MB per concurrent user
Windows 2000 Professional (Peer-to-Peer) (5 users maximum)	Pentium II 300 MHz	256 MB + 4-6 MB per concurrent user	Pentium III 550 MHz	256 MB + 4-6 MB per concurrent user
Windows NT Server 4.0 ⁴	Pentium II 300 MHz	128 MB + 4-6 MB per concurrent user	Pentium III 550 MHz	256 MB + 4-6 MB per concurrent user
Windows XP Professional Edition (Peer-to-Peer) (5 users maximum)	Pentium III 550 MHz	256 MB + 4-6 MB per concurrent user	Pentium III 550 MHz	256 MB + 4-6 MB per concurrent user
Windows 2003 Server (5 users maximum)	Pentium III 550 MHz	256 MB + 4-6 MB per concurrent user	Pentium III 550 MHz	256 MB + 4-6 MB per concurrent user

1. The minimum requirements are for the MAS 90 application only and are the minimum configurations that will allow the application to run with the minimal acceptable performance.
2. Actual requirements will vary based on your system configuration, additional software installed on the system, network architecture and number of concurrent active sessions.

3. Only Windows 98 Second edition will be supported with MAS 90 Version 4
4. Windows 98 (all editions) and Windows NT 4.0 (all editions) will not be supported with the 4.1 version of MAS 90